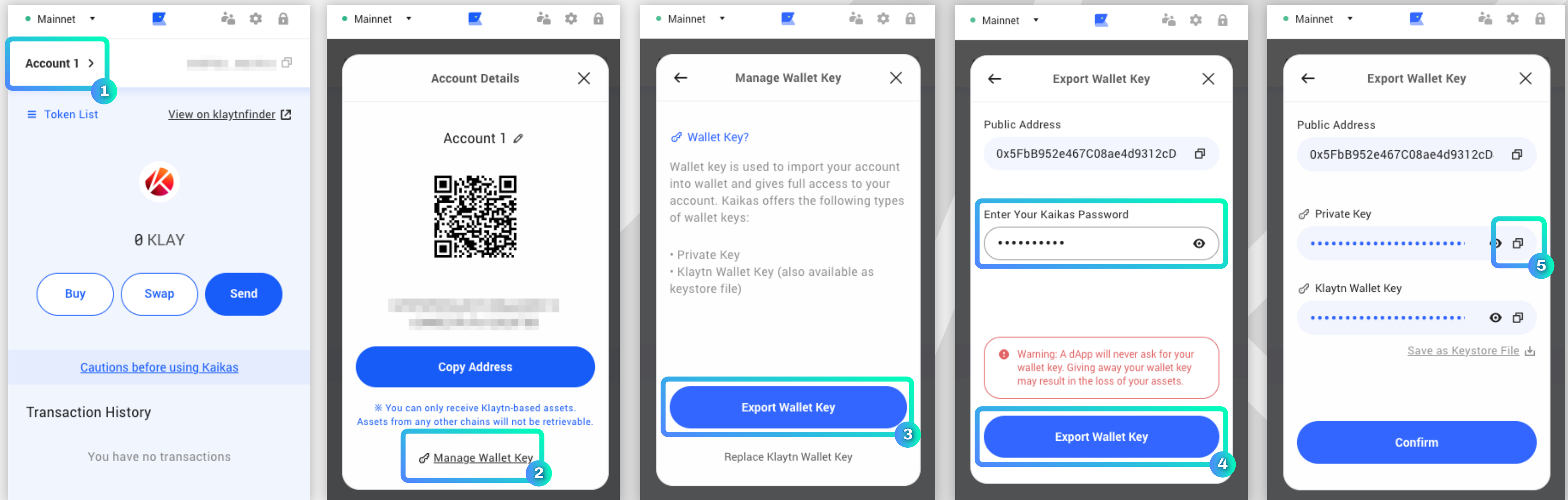


HOW TO IMPORT KAIKAS TO METAMASK

from KAIKAS



1

Open the Kaikas wallet and select the account you'd like to export

2

Click "Manage Wallet Key"

3

Click "Export Wallet Key"

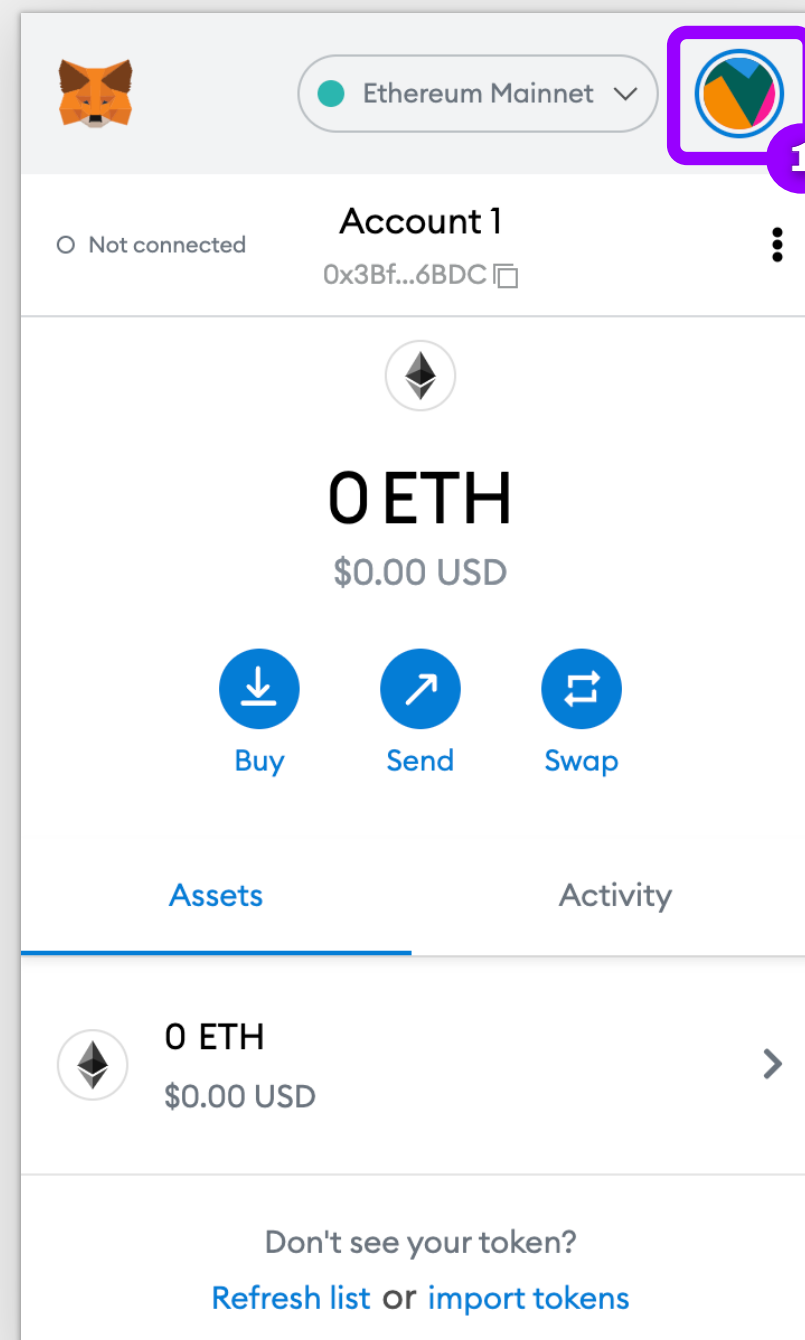
4

Enter your password and click "Export Wallet Key"

5

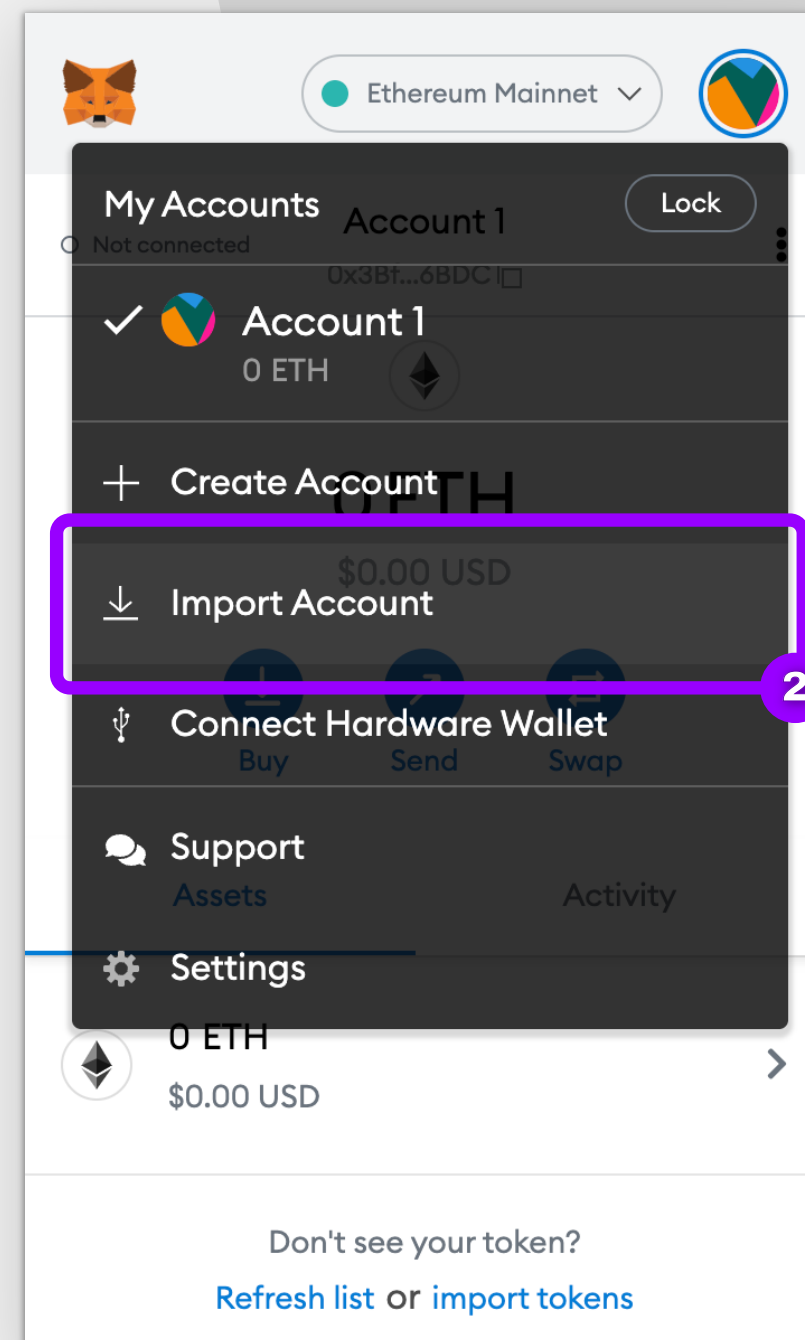
Your private key is released. Click copy icon to copy it, and click "Confirm"

to METAMASK



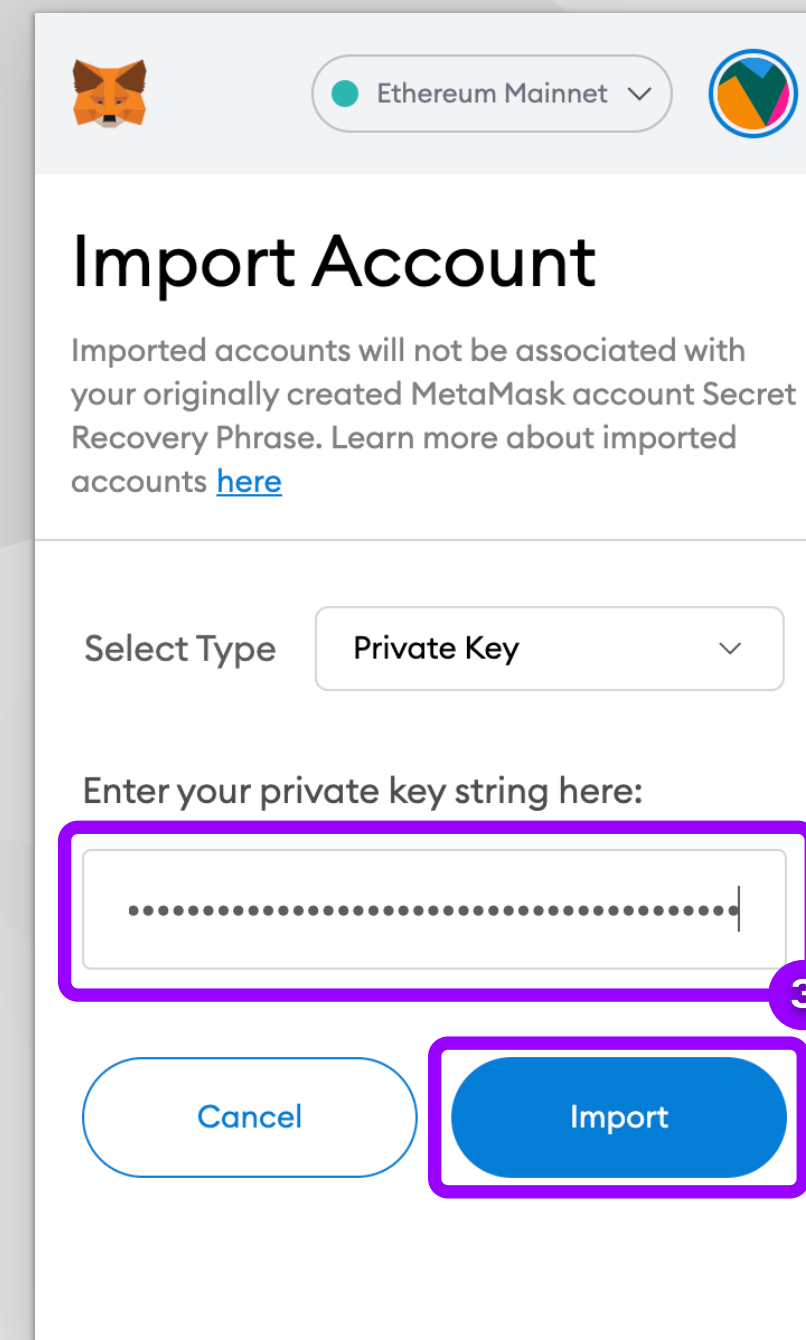
1

Open the MetaMask and click the circle icon at the top right corner of your MetaMask pop-up



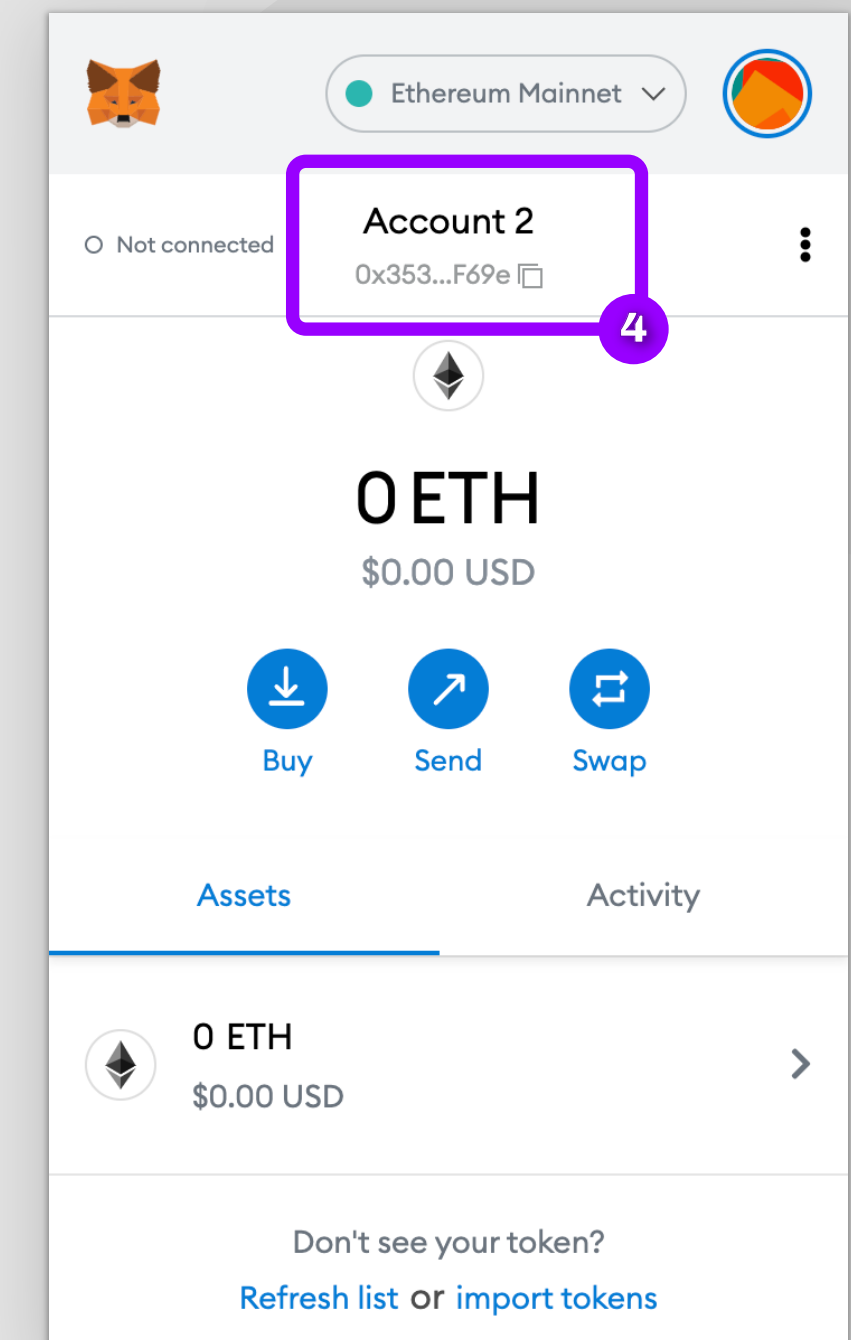
2

Select "Import Account" on the dropdown menu



3

Paste your private key copied from Kaikas Wallet and click "Import"



4

The account in the Kaikas wallet has been copied to MetaMask